

恒照度控制+人体感应多功能探测器

KTE2MLS-T

操作说明书



订货号: KTE2MLS-T

For your safety

⚠ RISK

All work carried out on the unit may only be performed by skilled electricians. Observe the regulations valid in the country of use, as well as the valid KNX guidelines

⚠ CAUTION

Do not connect the main voltage (230 V) or any other external voltage to any point of the BUS, except for the specific connections.

概述

KTE2MLS 为 KanonBUS EIB/KNX 总线系统专用于人体感应及光感检测和控制的传感器。该传感器是基于红外线技术的自动控制产品,适用于室内吸顶嵌入(暗装)安装可用于入户花园、客厅、走廊、卧室、卫生间、储物间、衣柜等场所。

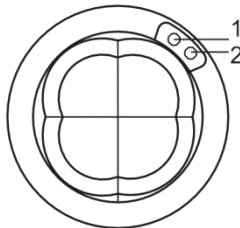
该传感器同时具备延迟时间调节和光感调节,可以在白天/黑夜不同的光照度情况下(具体光照度门限值可以自由设定)实现人进入感应区域触发开启指令,人离开一段时间后触发关闭指令。同时也可以结合恒照度控制,达到如在有人体活动的区域自动调整该区域的光照度为一个恒定值。

传感器可设置为主模式或从模式,被设定为主“master”的感应器可以对受控回路发出控制指令,被设定为从“Slave”的感应器只负责每隔 10 秒钟通知主感应器是否有人。

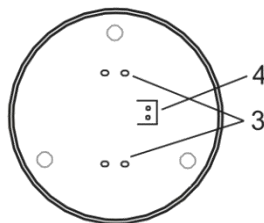
主要功能

- 延迟时间、照度门限值可通过 ETS 自行设定
- 快速自检,上电自检时间可达 5 秒内,无需漫长等待
- 人体感应禁止功能、照度控制禁止功能
- 2-Byte 光感功能
- 恒照度控制
- 主从功能选项可以将多个人体感应触发同一个回路
- 人体感应可触发 1bit 开关量或 1byte 值。结合逻辑模块可以实现更复杂的功能需求
- 恒照度控制可设定为是否依赖于人体感应
- EIB/KNX 直接供电,无须外接辅助电源
- 可触发多种操作: ON/OFF, UP/Down, 调光、场景、温度值/亮度值等
- 最大探测距离为 8 米

产品示意

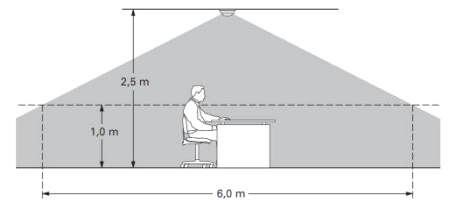


1. 编程指示灯/状态指示灯。上电闪烁一下。编程按钮按下时,常亮
2. 编程按钮。按下时,设备处于编程状态;再次按下,设备退出编程状态。



3. 安装卡扣,用于固定在安装铁片上
4. KNX/EIB 连接端子

安装使用



■ 安装铁片

将安装铁片固定在 86 底盒或天花板吊顶中,开孔的尺寸为直径 6cm。

■ 接线

将 KNX 连接端子插入探测器,之后卡入安装铁片内即完成安装

■ 地址分配/编程

通过触动探测器编程按钮将设备处于编程状态,此时红色编程指示灯亮。通过 ETS 将物理地址分配好,并将人体感应触发方式由 ETS 程序下载进模块内

技术参数

| | |
|-------|-----------------------|
| 供电 | 21 – 30V DC 总线直接供电 |
| 功耗 | < 10 mA |
| 连接 | KNX: KNX 红黑端子 |
| 光照度控制 | <0Lux~3000Lux(可调) |
| 探测距离 | 8m Max. |
| 延时设置 | Min. 5 秒; Max. 10 小时 |
| 工作温度 | 0°C to +70°C |
| 存储温度 | -25 °C to +70°C |
| 防护等级 | IP20 |
| 指示 | 编程指示灯/编程按钮 状态指示灯 |

Constant Lighting+Moving Sensor

KTE2MLS-T

Operation Manual



Order No: KTE2MLS-T

For your safety

⚠ RISK

All work carried out on the unit may only be performed by skilled electricians. Observe the regulations valid in the country of use, as well as the valid KNX guidelines

⚠ CAUTION

Do not connect the main voltage (230 V) or any other external voltage to any point of the BUS, except for the specific connections.

Description

KTE2MLS-T is a Multi-function KNX sensor with constant lighting and Moving detection. This sensor is a auto controlling equipment based on PIR, which is suitable for installing on the top and using in the garden/living room/passage and so on.

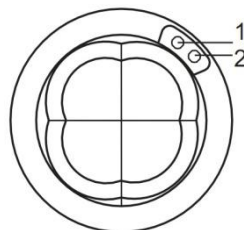
This sensor has both time-delay function and light control function, which can make the sensor work in the different light situation(the threshold can be freely defined). Meanwhile, the constant light control function can control the dimmer to adjust the illumination to be a constant value.

The sensor can be defined to the master mode or the slave mode. The sensor within the master mode can send the controlling order to the controlled items. The sensor within the slave mode can inform the master sensor the detecting situation every 10 seconds.

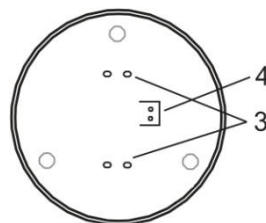
Main Application

- Delay time and threshold of light can be defined in the ETS
- Self-checking in only 5 seconds
- Moving detection disabled function and Light control disabled function
- 2-Byte light control
- Constant light control
- Master or slave mode can make several sensors work as one.
- The sensor can send 1 bit or 1byte value.
- Constant light control can be defined to depend on moving detection or not.
- EIB/KNX power supply directly
- To make several operation: ON/OFF, UP/Down, dimming, scene, Temperature/Light value and so on
- Max detecting distance is 8 meter.

Operating elements

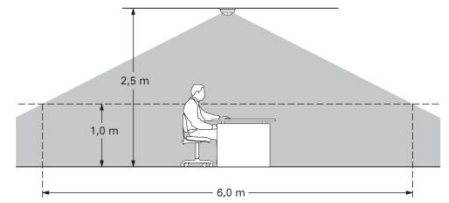


1. Programming LED/Status LED
2. Programming button



3. Installation snap joint, to fix on the metal plate
4. KNX/EIB bus connection terminal

How to install the device



- **Installation metal plate**
To fix the metal plate on the 86 bottom box or directly in the ceiling with the springs on the metal plate
- **Connection**
First insert the KNX terminal into the sensor, and then fix the sensor into the metal plate
- **Programming**
Push the programming button and the programming led turns into red. Then you can program in the ETS and download the settings into the sensor.

Technical Data

| | |
|---------------------|--|
| Power supply | 21...30V DC, made available by the bus |
| Power consumption | < 10 mA |
| Connection | KNX: KNX terminal |
| Light control | <0Lux~3000Lux |
| Detect distance | 8m Max. |
| Delay setting | Min. 5 sec ; Max. 10 hours |
| Ambient temperature | 0°C to +70°C |
| Storage temperature | -25 °C to +70°C |
| Type of protection | IP20 |
| Indicator | Programming led/Programming button Status LED |